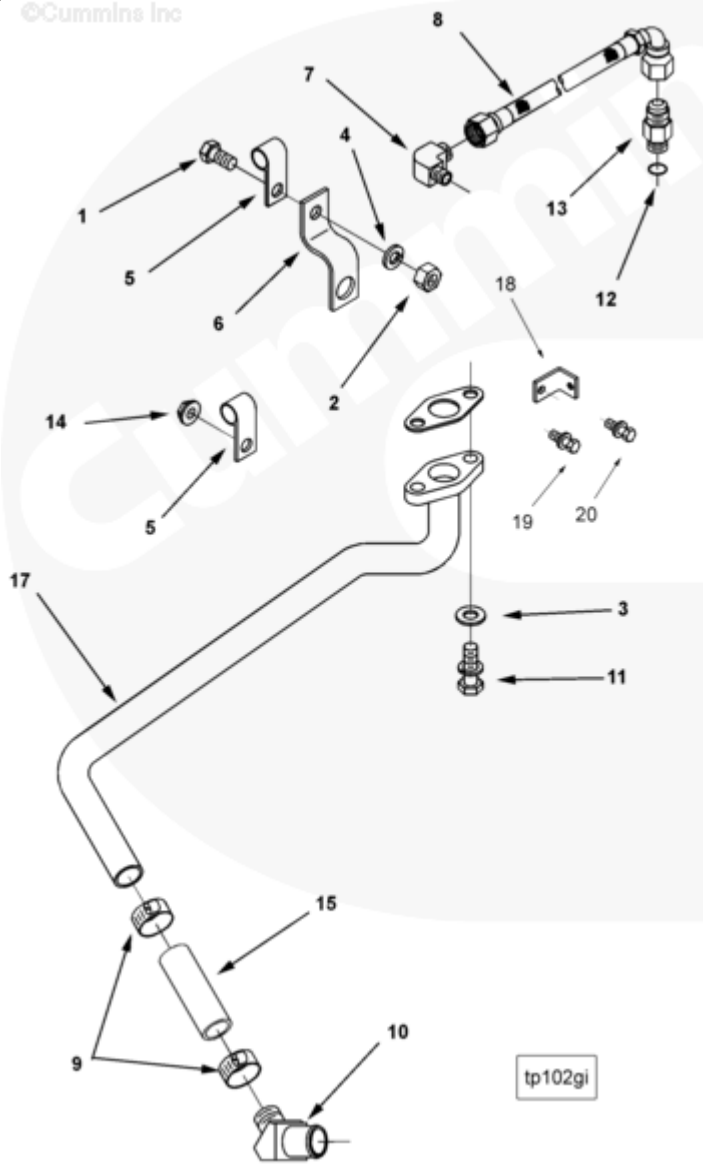




Parts Catalog - Option Detail

Electronic Parts Catalog - Option Detail				
Option	Group	Graphic	Film Card	Date
TP1745-02	10.06.2	tp102gi	FF	29-AUG-00
Engines	G855, G855 CM558, GTA855 CM558 (CM2358) G101, N14 CELECT, N14 CELECT PLUS, N14 MECHANICAL, NH/NT 855, QSM11 CM876 M101, QSM11 CM876 M102M, QSN14 CM876 N103, QSN14 CM876 N105, QSNT14 CM876 N102			



[SMALL](#) | [MEDIUM](#) | [LARGE](#)

Cart	Ref No	Part Number	Part Description	Required	Remarks
View My Cart					

		TP1745-02	Turbocharger Plumbing		
					Turbocharger supply and drain
					plumbing to suit rear mounted
					turbocharger. Drain tube
					routes from turbocharger to
					tapping in hand hole cover.
					Supply taken from # 6 tapping
					on main oil rifle. For
					use with hand hole cover
					offering provision for oil
					fill tube.
<input type="checkbox"/>	1	S 117	Hexagon Head Cap Screw	1	3/8 - 16 x 3/4 in.
<input type="checkbox"/>	2	S 223	Heavy Hexagon Nut	1	3/8 - 16 UNC
<input type="checkbox"/>	3	S 602	Plain Washer	2	3/8 in.
<input type="checkbox"/>	4	S 604	Lock Washer	1	3/8 in.
<input type="checkbox"/>	5	108722	Clip	2	
<input type="checkbox"/>	6	113710	Tube Brace	1	
<input type="checkbox"/>	7	142429	Male Adapter Elbow	1	
<input type="checkbox"/>	8	209957	Flexible Hose	1	
<input type="checkbox"/>	9	210753	Hose Clamp	2	9/16 - 1 1/4 Inch.
<input type="checkbox"/>	10	3003536	Elbow Hose Coupling	1	
<input type="checkbox"/>	11	3010596	Captive Washer Cap Screw	2	3/8 - 16 x 1 1/4 in.
<input type="checkbox"/>		3044943	Male Union	1	
<input type="checkbox"/>	12	3037537	O-Ring Seal	1	
	13	3044941	Male Union	1	
<input type="checkbox"/>	14	3063556	Hexagon Flange Nut	1	5/16 - 18 UNC
<input type="checkbox"/>	15	3065060	Flexible Hose	1	
<input type="checkbox"/>	16	3202117	Connection Gasket	1	
<input type="checkbox"/>	17	4003523	Turbocharger Oil Drain Tube	1	
<input type="checkbox"/>	18	68038	Hose Brace	1	

<input type="checkbox"/>	19	3063567	Captive Washer Cap Screw	1	1/2 - 13 X 1 1/4 Inch.
<input type="checkbox"/>	20	3071225	Captive Washer Cap Screw	1	3/8 - 16 x 3/4 in.

© 2019 Cummins Inc., Box 3005, Columbus, IN 47202-3005 U.S.A.
Terms of Use and Disclaimers | Recommended System Requirements
Need Assistance? Please click on the Contact Us button in the top right corner of any page.